



U.are.U[®] Pro

Fingerprint Authentication System

U.are.U Pro is a fingerprint authentication system for enterprises that want to eliminate the burdens and security problems of password-based authentication. U.are.U Pro uses advanced fingerprint recognition technology to heighten security and replace passwords. U.are.U Pro for Active Directory is specifically designed to take full advantage of the enterprise-class directory services and management capabilities of Microsoft[®] Windows 2000 Active Directory.

The Password Security Problem

Most organizations face increasing pressure to secure access to their network and applications. Their efforts are constrained by the practices of frustrated users who create trivial passwords, write them on Post-it[®] notes or use the same password for many different applications. Password-based user authentication remains the weakest link in the security chain and a large burden for end-users and IT support staff.

Fingerprint Authentication

U.are.U Pro utilizes state-of-the-art fingerprint recognition to allow users to securely and quickly log on with the touch of their finger. Unlike password and token-based authentication, fingerprint authentication is based on who you are, eliminating the burden and usage problems associated with passwords and tokens. The entire fingerprint recognition subsystem, including the optics, firmware, driver and the software recognition engine, is designed and optimized by DigitalPersona[™] for unmatched performance and reliability.

Its award-winning technology makes it easy to provide users with the heightened security and increased convenience of fingerprint recognition technology.

Reduced Support Costs

Adding fingerprint authentication produces measurable financial benefits and a rapid return-on-investment (ROI). By removing the need for your users to remember passwords you never have to worry about resetting those passwords or fielding the many support calls for lost or forgotten passwords. The results are clear—dramatically increased customer and partner satisfaction, increased employee uptime and reduced help desk and support costs.

Heightened Security

Effective password security is nearly impossible. U.are.U Pro makes it easy for users to maintain security because it's based on who they are (not what they can remember). U.are.U Pro also delivers additional security capabilities, such as two factor authentication, to support a full range of security needs. Furthermore, U.are.U Pro is a highly secure, end-to-end system. From the sensor to the server database, the system uses encryption and data signature technology to preserve privacy and system integrity.

Easy to Implement

Beyond the benefits of heightened security and convenience, implementing U.are.U Pro is simple. Both the client and server software are quick and easy to install. Because U.are.U Pro leverages the Microsoft Windows Active Directory management tools, additional administrative training is minimal. This turnkey application is a simple and powerful next step for a more secure network.

Security and Password Replacement

Key Benefits

- Replace vulnerable passwords with stronger, auditable fingerprint authentication
- Reduce help desk and password management support costs
- Secure access to your network and applications
- Leverage enterprise-class directory services and management capabilities of Microsoft[®] Active Directory
- Provide a reliable, verifiable and convenient authentication system
- Support legislated privacy and security requirements for healthcare and financial services



U.are.U Pro for Active Directory

Specifications

Desktop/Client Applications

Minimum System Requirements

- Supported operating systems
 - Windows XP
 - Windows 2000
 - Windows NT
 - Windows Me
 - Windows 98
- Hardware requirements
 - Pentium processor
 - 50 MB avail hard disk space
 - USB Port

Biometric Support

- Biometric software features
 - Fingerprint recognition algorithm
 - Local- or server-based authentication
- Supported fingerprint sensors
 - All U.are.U Sensors
 - U.are.U Fingerprint Keyboard

OS Logon

- Logon to local PC account
 - User identification/ authentication
 - Windows XP, 2000, NT, Me and 98
- Logon to network account
 - User identification/ authentication
 - Windows Network
 - Cached credential support
- User identification
 - Fingerprint identification
 - Keyless logon for most recent users (up to 20 users)
- User authentication
 - Username and credential(s)
 - Fingerprints and/or Windows psword
 - Administrative policy control
 - 1 & 2 factor authentication

Application Logon

- Logon to Applications
 - Fingerprint verification of current Windows user
 - Supports Win 32 logon screens
 - Supports web site logon
 - No scripting or programming required

PC Unlock

- Lock Windows session
 - Windows lock command
 - Windows screen saver lock
- Unlock Windows session
 - User identification/ authentication
 - By current user or administrator
 - Enforces logon authentication policy

File Encryption

- Encrypt/decrypt files and directories
 - Fingerprint verification of current Windows user
 - 128-bit, RSA RC4 stream encryption
 - Integrated into context menus
 - Recovery utility

Deployment Support

- Custom installation
 - Select applications
- Remote installation
 - Supports MSI-compatible installers
 - Supports Windows 2000 GPO installation
- Deployment options
 - Standalone PC
 - Networked PC
 - Networked PC with server
 - Laptop PC (docked/undocked)

Server Software

Minimum System Requirements

- Supported operating systems
 - Windows 2003 Server
 - Windows 2000 Server
 - Installs on domain controller(s)
- Hardware requirements
 - Pentium processor
 - 10 MB avail hard disk space
 - Additional 1 KB to 5 KB AD database storage per registered user

Database Support

- Active Directory
 - Windows user record extension
 - Schema extension utility
 - Access control

Fault Tolerance

- System data replication
 - Active Directory replication services

Authentication services

- Automatic failover

Scalability

- Up to 100,000 users
- Load balancing
- 1000 users per server

Security

- Server-based authentication
- Data encryption
 - User data (pswrds, FPs, etc)
 - All client/server communications
 - 128-bit/RSA RC4 stream encryption
- Data signature
 - User data (pswrds, FPs, etc)
 - 1024-bit RSA signature

Auditing

- Centralized audit logs
 - Domain-wide support
 - Windows Server security and system event logs

Deployment Support

- Schema extension utility
 - Applies to entire AD forest
- Server discovery
 - Domain-based
 - DNS registration
 - Workstation to server
 - Server to server

System Administration

Administrator user interface

- Native Windows Server administration via GPO
- Administrator access rights
 - Supports Win 2000 delegated administration

Security settings

- Cached credentials
- Authentication policies
- Server authentication
- False Accept Rate

Performance settings

- Logon identification list
- Max fingers per user

Auditing

- Windows event log
- Selectable log entry
- Supports report filtering

System Security

Data Encryption

- User data (pswrds, FPs, etc)
- All client/server communications
- 128-bit/RSA RC4 stream encryption
- 128-bit/Tiny Encryption Algorithm

Data Signature

- User data (pswrds, FPs, etc)
- 1024-bit RSA signature

Fingerprint Sensor

Performance

- Self-calibrating
- Auto image capture
- Image captured 'wink'
- Rotation invariant

Security

- Latent image rejection
- Encrypted transmission
- Challenge-response link

Deployment Support

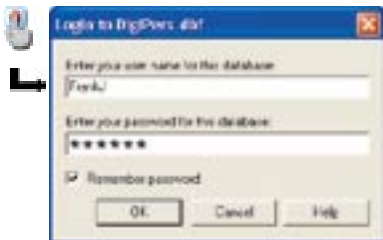
- Plug and play USB device

Packaging Options

- Standalone USB peripheral
- Keyboard integrated



Log on to your Windows user account with the touch of a finger



Touch the sensor to log on to any application

U.are.U Pro for AD

Workstation Packages

Sensor Package (Part # 83220-001)

- Workstation Software CD
- Administrator Guide
- Quick Install Card

Keyboard Package (Part # 83330-001)

- Workstation Software CD
- Administrator Guide
- Quick Install Card

Server Package

Server Software (Part # 63001-001)

- Server Software CD
- Administrator Guide
- 25-User Authentication Licenses

User Authentication License

- License Certificate (Part # 93005-001)